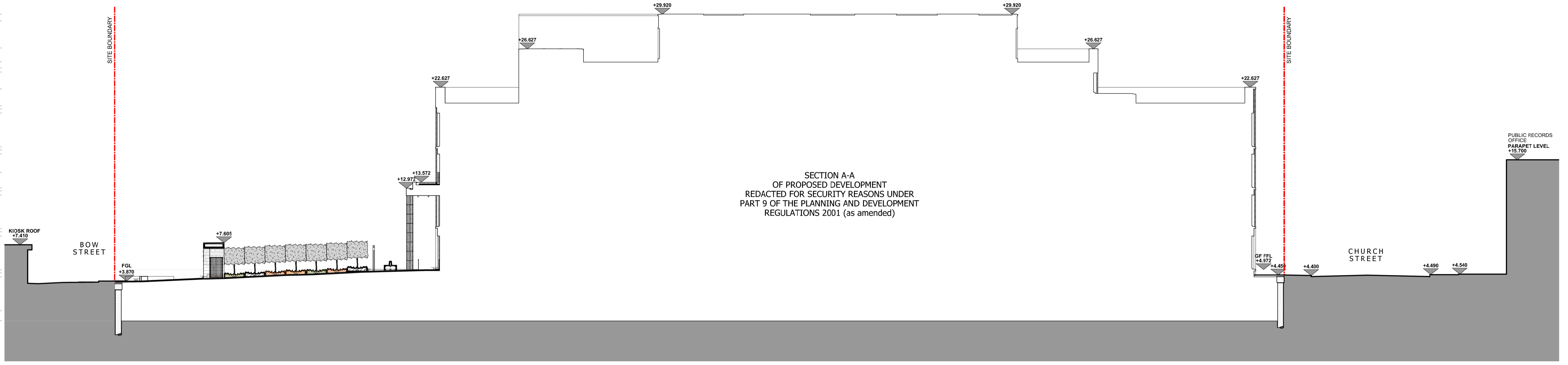
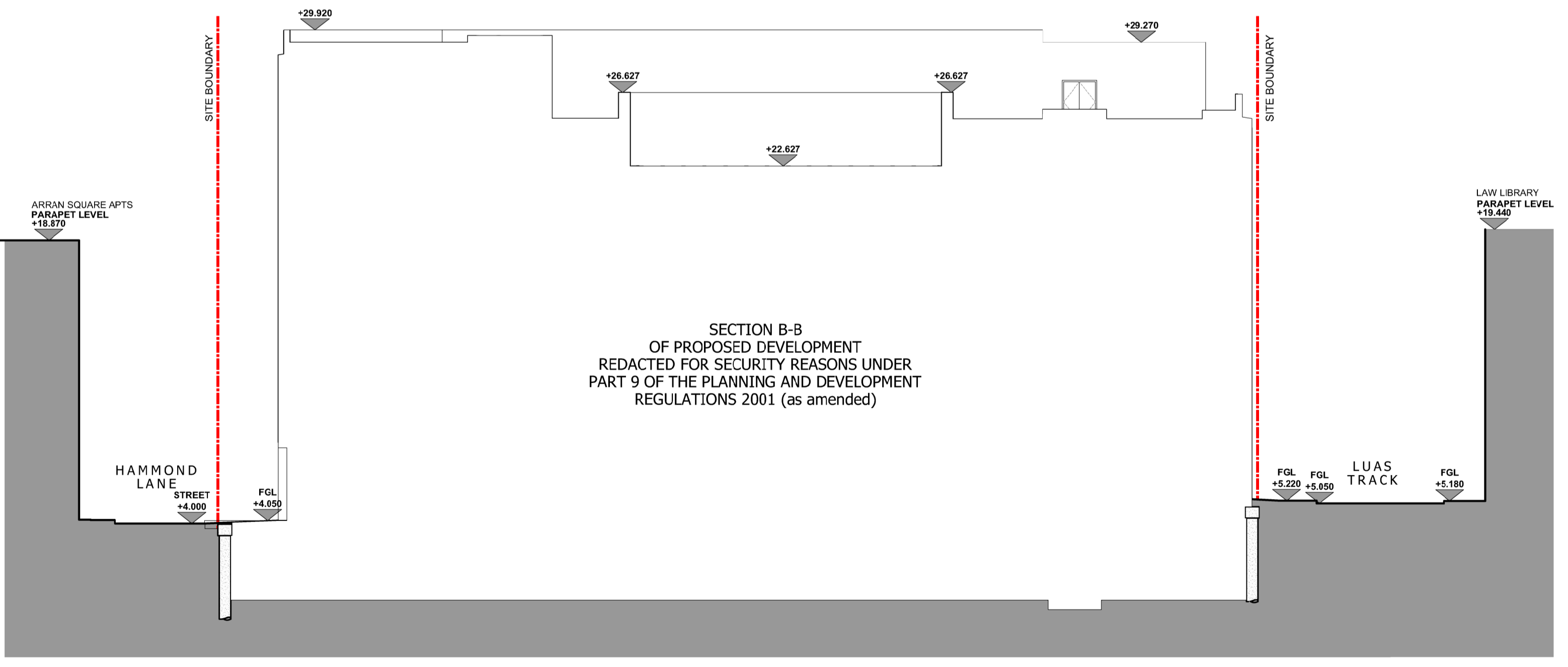


- ATRIUM PARAPET LEVEL: +29.20
- PARAPET LEVEL 04: +26.627
- FIFTH FLOOR PLANT LEVEL: +26.627
- PARAPET LEVEL 04: +22.627
- FOURTH FLOOR LEVEL: +22.627
- THIRD FLOOR LEVEL: +13.572
- PARAPET LEVEL 02: +12.972
- SECOND FLOOR LEVEL: +7.605
- FIRST FLOOR LEVEL: +7.410
- GROUND FLOOR LEVEL: +3.870
- BASEMENT FLOOR LEVEL: +3.870
- GRID DATUM LEVEL: +3.870

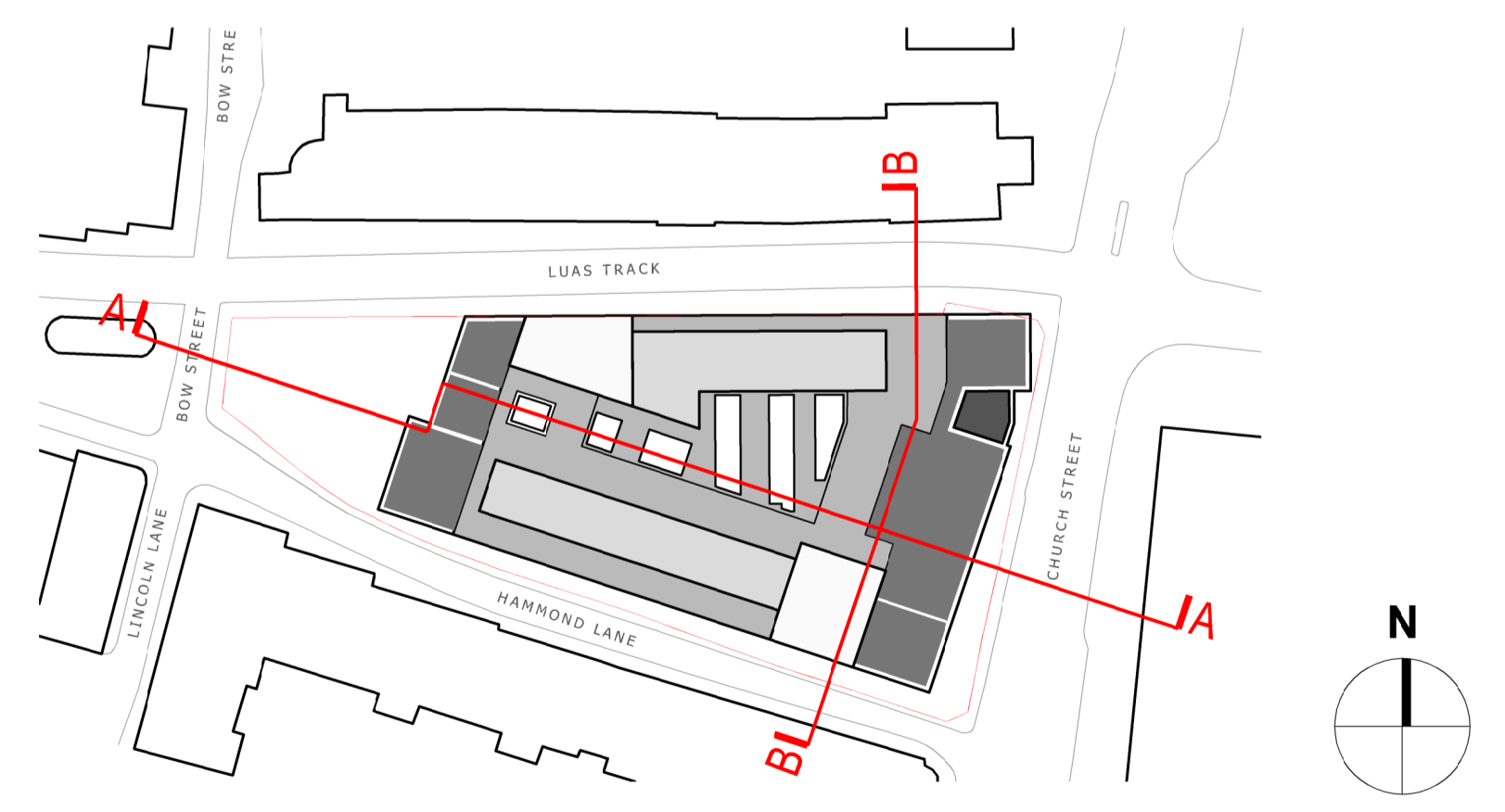


PROPOSED SECTION AA

- ATRIUM PARAPET LEVEL: +29.20
- PARAPET LEVEL 04: +26.627
- FIFTH FLOOR PLANT LEVEL: +26.627
- PARAPET LEVEL 04: +22.627
- FOURTH FLOOR LEVEL: +22.627
- THIRD FLOOR LEVEL: +19.440
- PARAPET LEVEL 02: +19.440
- SECOND FLOOR LEVEL: +13.870
- FIRST FLOOR LEVEL: +13.870
- GROUND FLOOR LEVEL: +4.000
- BASEMENT FLOOR LEVEL: +4.000
- GRID DATUM LEVEL: +4.000



PROPOSED SECTION BB



KEY PLAN



OPW Major Projects
 Ciarán O'Connor, State/Principal Architect FRIAI
 Sarah Woods, Assistant Principal Architect MRIAI
 Derek Fortune, Senior Architect MRIAI
 Patrick Mooney, Architect MRIAI
 Dónal Ryan, Architect MRIAI
 Davida Dee, Architect MRIAI

General Notes:
 All dimensions are in millimeters and are to be confirmed on site. No dimensions to be scaled from drawings.
 All levels are given related to O.S. datum Malin Head in metres.
 All works are design in accordance with current building regulations.
 This drawing is to be read in conjunction with all drawings and reports - refer to the full set of planning documentation which forms part of this application.
 Having regard to Part 9 of the Planning and Development Regulations 2001 (as amended), the internal arrangements have been redacted to avoid prejudice to the security of the proposed development.

Drawing Revision:				
Revision	Date	By	CHK'd	Description

Project Title:
 Dublin Family Courts
 Hammond Lane,
 Dublin 7

Drawing Title:
 Proposed Sections AA & BB

Project Role:	Architect	OPW Section Project Reference:	N.15.015	Scales at A1:	1:200
Drawn:	DD	Checked:	DF	Approved:	SW
Status Description:	Planning	Status:	P3	Date:	November 2023
Drawing Number:	PLA_030	Revision:	0		